

Overseas Registration Examination Part 1 Results for August 2016

Candidates have been sent their individual marks by email, and may wish to use these charts to compare their performance with others.

For each paper, the normalised pass mark is 50%.

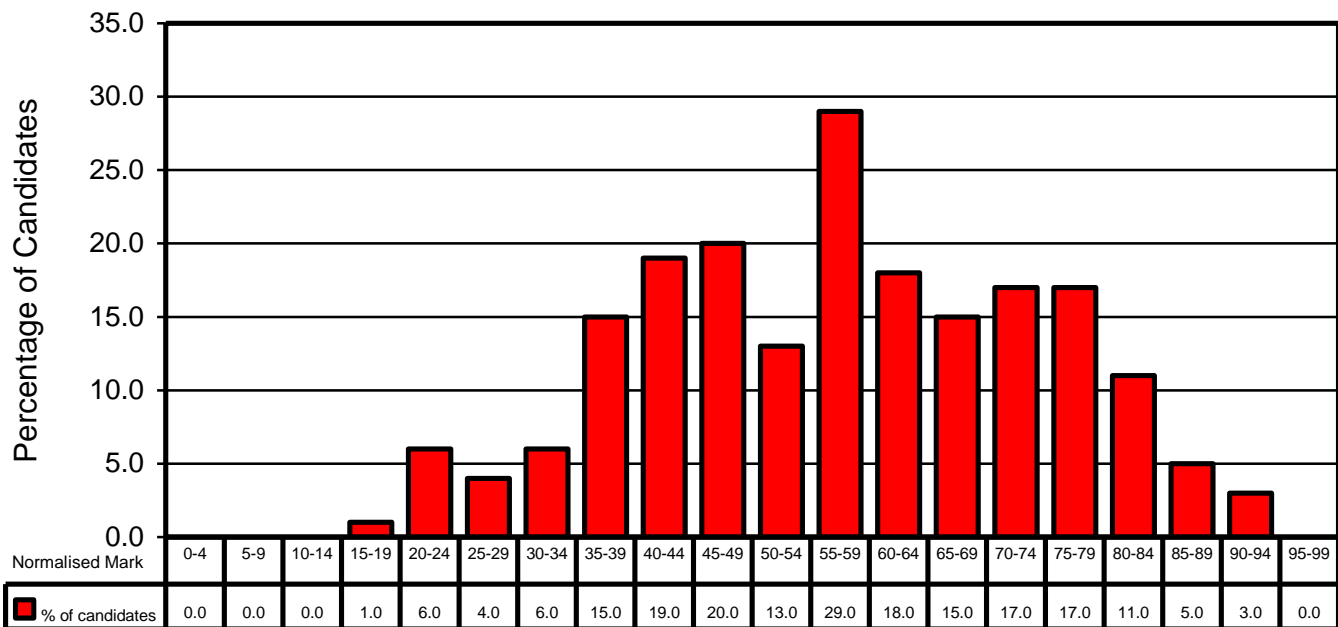
The table below provides a description of the mark ranges and how they compare to the pass mark:

| Mark | Range Description |
|-------|-------------------|
| 0-39 | Fail |
| 40-49 | Borderline Fail |
| 50-59 | Pass |
| 60-69 | Good Pass |
| 70-79 | Excellent Pass |

The table below shows the percentage of candidates passing each part of the examination:

| Examination Part | Pass Rate (%) |
|------------------|---------------|
| Part 1(a) | 64 |
| Part 1(b) | 65 |
| Part 1(a) & 1(b) | 57 |

Distribution of Results for ORE Part 1(a)



Distribution of Results for ORE Part 1(b)

